

9/69 Hector Street  
Osborne Park  
Perth W.A.  
6017  
T 08 9204 1744  
F 08 9204 1755

27 FEB 2009



TROJENS & CO PTY LTD  
TRADING AS

**PROFESSIONAL TREE SURGEONS**

### Concise Arboricultural Report

Requested by: The Owners of The Mews  
147 -159 Charles Street  
West Perth

Subject: Eucalyptus grandis and Eucalyptus citriodora

Concern: Eucalyptus tree roots interfering with fence, curbing and road.

Location: On the boundary fences to car park entry.

#### **General Observations:**

The Eucalyptus trees despite being lopped in half are in good health and growing vigorously. These trees will continue to grow and increase substantially in size, despite any type of pruning, the root system and trunk will continue to grow.



#### **Concern:**

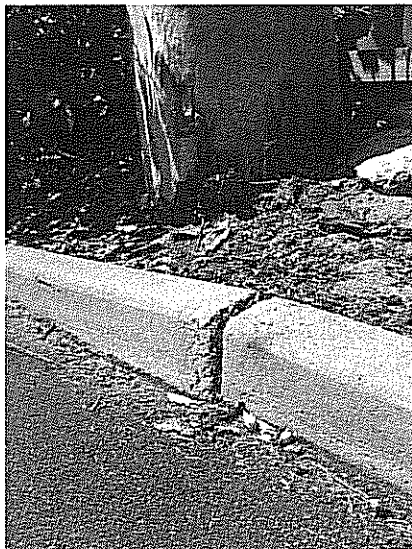
These trees will continue doing damage to the fences curbing and the freshly laid bitumen which will erupt again. Advantageous roots will continue to seek water and nutrients. The type of lopping that is being undertaken will only encourage the occurrence of branch failure at the site where the new epiccomic regrowth is taking place. Not the most desirable situation for a car park.

9/69 Hector Street  
Osborne Park  
Perth W.A.  
6017  
T 08 9204 1744  
F 08 9204 1755

## PROFESSIONAL TREE SURGEONS

### Site selection:

The site selection for the planting of this species is inappropriate and will only continue to do damage. Obviously this species would be better suited to open space, where it cannot interfere with the fencing, road surfaces, reticulation, underground services and/or sewerage.



### Recommendations:

Remove the trees completely to ground level and poison. Replace with a more suitable ornamental size tree or trees. These trees will provide more foliage at an appropriate level for privacy. Will require far less maintenance and do far less damage.

### Conclusion:

It is my opinion that the trees located at the rear car park of 147 Charles Street have been planted inappropriately for the location. There is clear evidence at the site, and in the photographs that the buttressing roots have clearly done damage. It is my opinion that they will continue too.

Signed:

**Royce Turner**  
*Managing Arborist*  
*Professional Tree Surgeons*

